



NORDIC FIBERGLASS, INC.



Quality Products for the Electric Utility Industry
www.nordicfiberglass.com

TechAdvantage
Henry B. Gonzalez Convention
900 Market Street
San Antonio, Texas
March 3-6, 2024

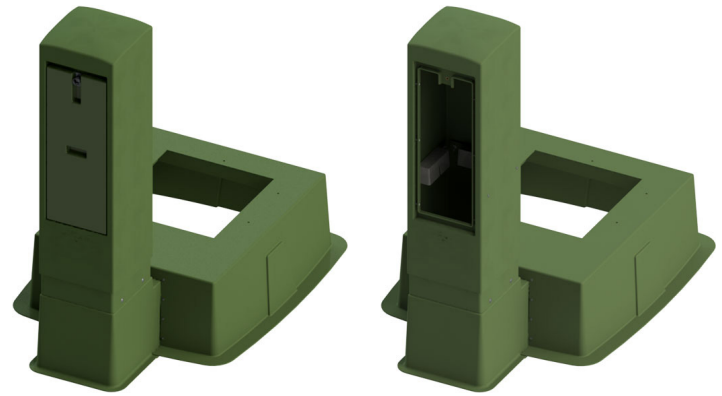




CBP-37-43-15A-MG-22x24

Features & Benefits

- Manufactured of CompressionMolded Fiberglass.
- Light weight, yet built strong and durable for single phase transformers from 25kVA up to 167kVA.
- Provisions for tie-down brackets.
- No costly forms to set up, no cement needs to be poured, the fiberglass box pads reduce installation time by being built ready to go.
- Bottom flange provides a stable footing for a level transformer installation.
- Excellent stability in frost prone areas.
- Pigment is permanently molded into the fiberglass.
- Vertical ribs molded in to increase side wall stiffness.



CBP-37-43-15A-MP-L6350-MG-22x24

Features & Benefits

- 37"W x 39"D x 15"H box pad accommodates single phase transformers ranging from 25kVA up to 167kVA.
- Bury the 15" box pad 9" in the ground.
- 37"W x 43"D x 15"H box pad accommodates single phase transformers ranging from 25kVA up to 167kVA.
- Bury the 15" box pad 9" in the ground.
- Box pad's bolted on extension accommodates one MPP-141455-MG-X meter pedestal.
- The box pad's open underneath interior cavity provides a raceway between the single phase

transformer and the meters.

- Install up to 2 meters on the meter plastic pedestal.

- Meter pedestal accommodates three six port 350 MCM connectors inside the pedestal.





ND-2202248-MG-125-X-X

Features & Benefits

- Hot-dipped galvanized MP-125 mounting plate accommodates up to two, 2, 3, or 4 pt., 15/25kV, 200/600Amp junctions with U-straps, except Cooper 35kV.
- Does not accommodate 200A taps off of the 600A junction.
- Meets ANSI C57.12.28 Pad-Mounted Enclosure Integrity Standard.
- Stainless steel cabinet bolting hardware is included with the cabinet.
- ND-220224-MG-125-X-X can be used as a deferral cabinet or as a single phase cabinet.
- **Deferral cabinet:** Install the ND-220224-MG-125-X-X on any CBP "A" series boxpads.
- "Defers" a transformer when electrical components are installed in the temporary deferral cabinet.
- Once the transformer arrives; disengage the electrical components, remove the cabinet from the box pad, and install the transformer.
- Cabinet can be stored or used on another box pad for a future transformer.
- **Single phase cabinet:** Install the ND-220224-MG-125-X-X on the ND-220224-MB-MG for a two-piece unit called the ND-2202248-MG-125-X-X.
- Two-piece design: Cabinet and ground sleeve are produced of fire-retardant resin and a combination of chopped glass spray-up and hand lay-up using woven roving glass reinforcement, which adds greatly to their strength.
- Below parking. The cabinets four eye-bolts allow the line-person to simply hook-up the cabinet, position it over the cables, and place it in the excavated area.



ND-2562448-MG-152-4152-B3A

Features & Benefits

- Top Width: 56" x Top Depth: 24" x Cabinet Height: 48"
- Rotating mounting plate "table" makes installing junctions easier.
- Optional grounding systems available in solid copper or copper strand wire.
- Accommodates up to three, 2, 3, or 4 pt., 15/25kV 200 Amp & 600 Amp junctions with U-Straps.
- Movable parking stands, park it where you want!
- Self locking cam arm.
- Double locking lid.
- Lid can be opened wide to allow easy access to junctions from the top and sides.



PSP-151530-MG-CB-FIBER

Features & Benefits

- Nordic's PSP-151530-MG-CB-FIBER pedestal is the enclosure for a fiber optic enclosure.
- Lockable & Removable lid allows open access for easy training of fiber strands inside the flared base.
- Pedestal's internal bracket makes it easy to attach the fiber optic enclosure.
- The word "FIBER" is imprinted on the top lid.
- UV resistant



PSPX2-101830-MG

Features & Benefits

- Pedestal is interchangeable with pedestals the same size from other manufacturers.
- Available with a single vertical penta-head bolt lock or a double lock with a hasp bit and a vertical penta head bolt.
- "WARNING & ELECTRIC", is imprinted on the top in raised lettering.
- A 2-inch flange around the perimeter provides stability when buried.
- The top is secured to the base by a molded in flange in back and penta-head locking in the front.
- Ribs and steps are molded into the pedestal for rigidity.
- This design prevents deflection in a buried position and ensures the base and lid a unified connection after servicing.
- Stainless steel hardware provides long term protection against rust. UV additives and pigment are permanently molded into the polypropylene and does not peel providing a maintenance free pedestal for many years.
- Resists fertilizers, salt air, and ultraviolet attack.

**PSPS-101544-MG-L6350**

Features & Benefits

- PSPS: Straight bottom profile.
- PSPF: Flared bottom profile.
- Manufactured by a rotational molding process.
- Rust free materials and stainless steel hardware.
- Linear low density polyethylene material is UV stabilized.
- "ELECTRIC" is molded into the pedestal top for easy identification
- There is an 8" x 10" label area molded in.
- Accommodates three or four 6 port 350 or 500 MCM connectors.
- Clear plastic covers included when connectors are ordered.

**PSPF-101538-MG****PSP-91330-MG PSP-91336-MG**

Features & Benefits

- PSP-91330-MG Overall height: 30", Lid Height, 15", Bottom Base height: 15".
- PSP-91336-MG Overall height: 36", Lid Height, 18", Bottom Base height: 18".
- CE (cable entrance) has an optional CEC-Kit that covers the 2" OD hole in the pedestal.
- House free standing secondary connectors.

**PSP-151530-MG PSP-151530-MG-L6350**

Features & Benefits

- Overall height: 30", Lid height: 15", Bottom base height: 15".
- PSP-151530-MG-L6350 and PSP-151530-MG-L6600 include a rigid plastic bracket that will accommodate either 6 way 350MCM or 600MCM connectors.

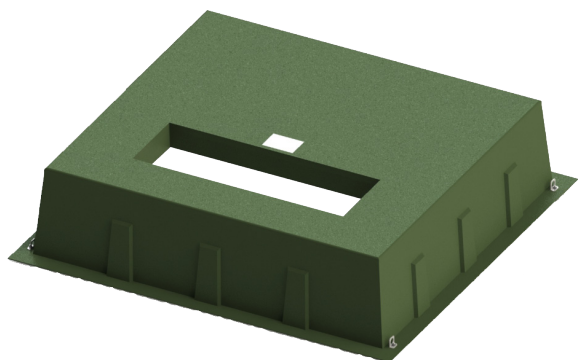
**PRMC-150-MG PRMC-190-MG****Features & Benefits**

- CE (cable entrance) has an optional CEC-Kit that covers the 2" OD hole in the pedestal
- House free-standing secondary connectors.
- Manufactured of SMC (Sheet Molded Compound) comprised of a thermoset resin, chopped roving, fillers and a catalyst are used in both sheet form.
- "ELECTRIC" is molded in raised lettering on the top.
- A 3-inch flange around the perimeter provides stability when buried.
- P-109 locking assembly for safety.
- Fire retardant, UV additives and pigment are permanently molded into the fiberglass.
- Fiberglass does not peel providing a maintenance free pedestal for many years.
- Pedestals resist fertilizers, salt air, and ultraviolet attack.
- It will not rust or corrode.
- Optional cable entrance cover available.
- Stainless steel and Aluminum hardware provide long term protection against rust.

**PHH-152315-MG****Features & Benefits**

- PHH-1523-15-MG Handhole is interchangeable with the same sized handholes from other manufacturers.
- The cover can be taken off by removing the 3/8" Pentahead bolt (PHH Series).
- PHH2 Series is a double lock system, penta head bolt plus bit for pad locking.
- Not rated for vehicular traffic.
- Manufactured by injection molding process, copolymer-polypropylene.
- The Munsell Green pigment is blended through out the material, which contains UV stabilizer for weatherability.
- Hand Holes designed for flush burial.
- "ELECTRIC" is imprinted on standard covers.

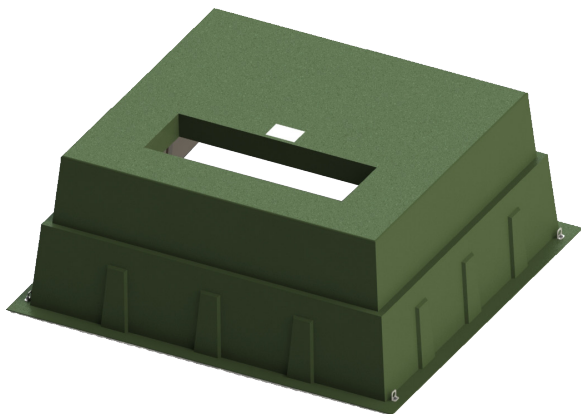
**PHH2-161912-MG****PHH-161918-MG**



GS-75-69-18RT-9K-MG-48x16

Features & Benefits

- Nordic's 9K box pads support transformers up to 9,000 lbs.
- 9K box pads accommodate transformers that fit within the box pad's flat surface area of 75" wide by 69" deep. The transformer's cable compartment must cover the box pad's 48" x 16" top opening.
- Lifting eyes are standard on these box pads making them easier to handle in the yard and in the field.
- No more searching the yard or waiting for the factory to make one for you, just order a pallet of either the 18" or 36" high units or both. These box pads will be there when you need them.



GS-75-69-36RT-9K-MG-48x16



Switchgear Box Pads

Features & Benefits

- The down-turned flanges around the top openings provide additional support for the switchgear.
- The flange around the bottom perimeter provides excellent stability in a buried position.
- Nordic box pads for switchgear are available in many sizes, with top measurements ranging from 34" x 25" to 106" x 74" and heights of 15" to 48".
- They are produced of fire-retardant resin and a combination of chopped glass spray-up and hand lay-up using 18 ounce woven roving glass reinforcement.
- The steps are reinforced with 2x4's, which are completely encapsulated in additional layers of chopped glass and woven roving glass. Vertical ribs are molded in below the steps for added strength.
- The exterior is covered with Munsell green gel-coat for superior weatherability and protection from ultraviolet light.
- These box pads are delivered ready for immediate installation.
- No costly forms to set up, no cement needs to be poured, the fiberglass box pads reduce installation time by being built ready to go



NORDIC FIBERGLASS, INC.



Quality Products for the Electric Utility Industry

Nordic Fiberglass, Inc.
21415 U.S. Hwy 75 NW
P.O. Box 27
Warren, MN 56762
Phone: 218-745-5095 Fax: 218-745-4990
sales@nordicfiberglass.com
www.nordicfiberglass.com

TechAdvantage
Henry B. Gonzalez Convention
900 Market Street
San Antonio, Texas
March 3-6, 2024

