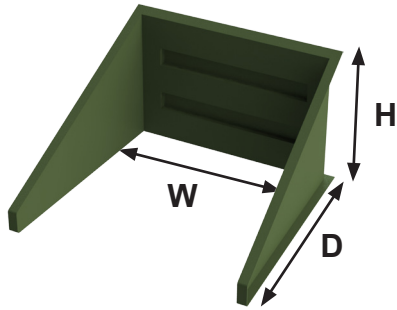


Hill Holders

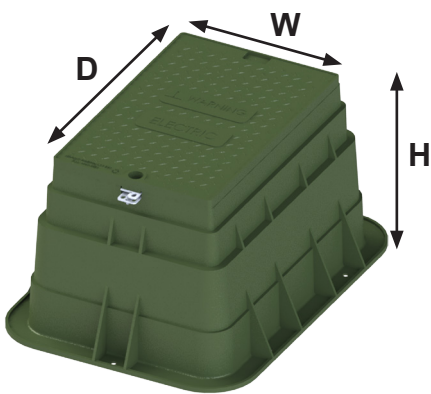


- The NHH-32-46-52-MG and NHH-32-54-52-MG have 2 horizontal ribs on the back side for added strength.
- The fiberglass laminate is produced with chopped glass and woven roving
- The 2" flange around the entire perimeter provides stability.
- UV & Fire resistant.

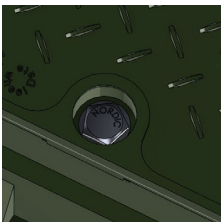
Product	W-Width	D-Depth	H-Height
NHH-16-46-52-MG	46"	52"	16"
NHH-20-54-52-MG	54"	52"	20"
NHH-32-46-52-MG	46"	52"	32"
NHH-32-54-52-MG	54"	52"	32"



Pedestals - Hand Holes - Plastic



- Plastic hand holes are made from copolymer polypropylene and designed for flush burial.
- The Munsell green pigment is blended throughout the material, which contains UV stabilizer for weather-ability.
- Units include a flat cover. "ELECTRIC" is imprinted on standard cover.
- PHH: plastic hand hole with single lock, PHH2: plastic hand hole with double lock.
- HHC: hand hole cover with single lock, HHC2: hand hole cover with double lock.
- PSPXB: hand hole base with single lock, PSPX2B: hand hole base with double lock.



PHH-152315-MG
Single Lock



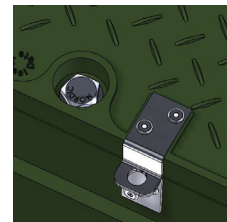
PHH-161912-MG
Single Lock



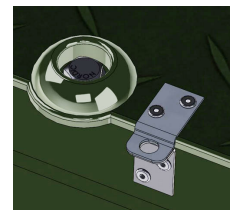
PHH-212115-MG
Single Lock



PHH2-152315-MG
Double Lock



PHH2-161912-MG
Double Lock



PHH2-212115-MG
Double Lock

Product	W-Top Width	D-Top Depth	H-Height	Cover	Base	Locking System
 PHH-152315-MG	15"	23"	15"	 HHC-1523-MG	 PSPXB-152315-MG	Single lock with penta bolt