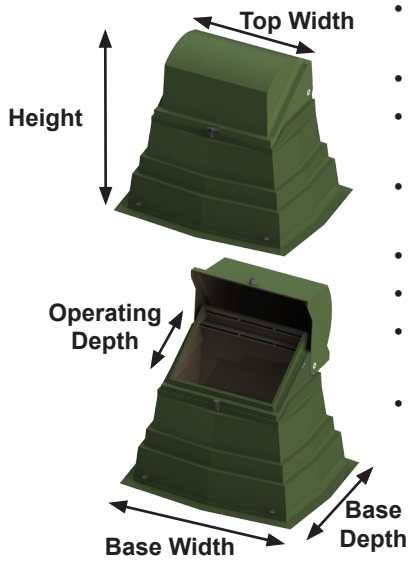
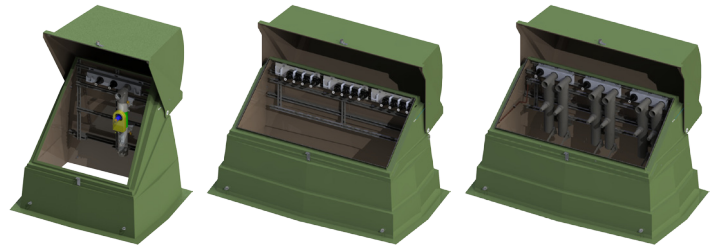


# Cabinets - Vacuum Switch

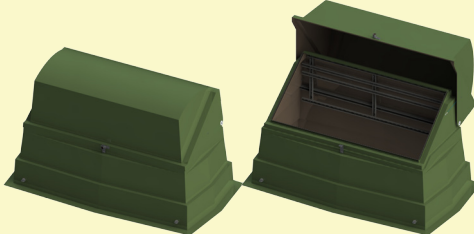


- Cabinets accommodate a variety molded vacuum interrupter switchgear from Elastimold MVI/MVS fault interrupter switchgear, and G&W Trident switchgear.
- The fiberglass laminate is produced with chopped glass and woven roving.
- Horizontally installed struts can be moved up or down to accommodate various electrical junction mounting brackets.
- Double locking; penta-head bolt with hasp and provisions for a pad-lock provide security.
- Meets ANSI C57.12.28 Pad-Mounted Enclosure Integrity Standard.
- Silicon bronze penta-head bolt, and stainless steel hardware.
- Optional copper ground systems and brand name junctions are available for factory installation.
- UV & Fire resistant.

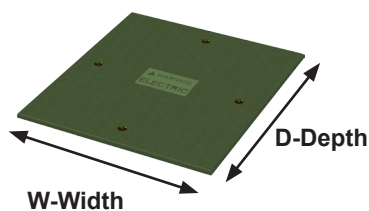


Product	Top Width	Operating Depth	Base Width	Base Depth	Height
 ND-362436-MG-UNI2-X-X	36.5"	24"	55"	42"	36.5"
 ND-362442-MG-UNI2-X-X	36.5"	24"	59"	46"	42.5"
 ND-362454-MG-UNI2-X-X	36.5"	24"	64.5"	51.5"	55"
 ND-403264-MG-UNI4-X-X	39.5"	30.5"	64.5"	51.5"	63.5"

## Cabinets - Vacuum Switch

Product	Top Width	Operating Depth	Base Width	Base Depth	Height
 ND-683054-MG-UNI4-X-X	68.5"	26"	94"	53"	53.5"

## Covers, Ground Sleeve



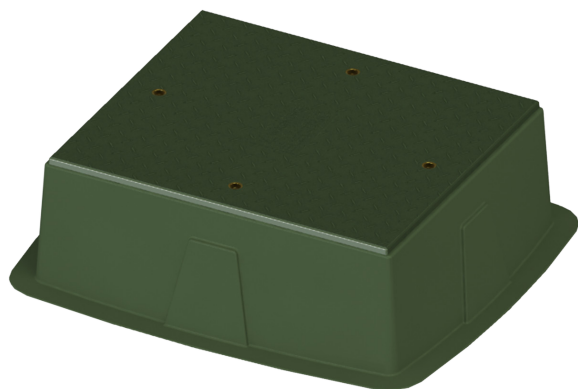
Guideline for determining product size

GSC-37-43-MG = GSC = Ground Sleeve Cover

37-43 = 37"W x 43"D

MG = Munsell Green

- Rust free fiberglass construction and stainless steel hardware.
- The exterior is applied with a Munsell green gel-coat (not applicable to the GSC-37-43-MG cover), which contains UV stabilizer and provides superior weather-ability and resistance to ultraviolet attack.
- The standard cover is fabricated of one layer of 1/2" plywood encapsulated in fiberglass, using fire retardant resin and chopped glass and 18 ounce woven roving reinforcement.
- UV & Fire resistant.



GSC-37-43-MG cover installed on the  
CBP-37-43-15A-MG-22x24

Product	W-Width	D-Depth
GSC-37-43-MG	37"	43"
GSC-42-42-MG	42"	42"
GSC-44-44-MG	44"	44"
GSC-54-44-MG	54"	44"
GSC-55-37-MG	55"	37"
GSC-65-56-MG	65"	56"
GSC-67-61-MG	67"	61"
GSC-69-47-MG	69"	47"
GSC-69-65-MG	68"	65"
GSC-75-69-MG	75"	69"
GSC-75-73-MG	75"	73"
GSC-86-78-MG	86"	78"
GSC-86-84-MG	86"	84"

### Features: GSC-37-43-MG

- The top of the cover is a textured non-skid diamond tread surface, which provides a safe operating platform in all types of weather.
- UV & Fire resistant.