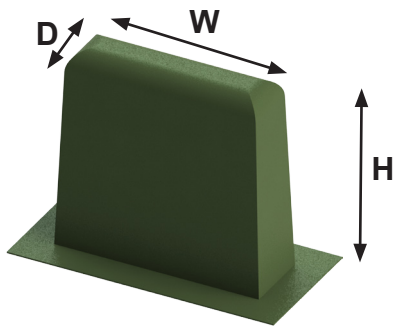


Pedestals - Looping



- Designed for looping primary cable at points where future plans call for installation of additional equipment.
- The fiberglass laminate is produced with chopped glass and woven roving.
- UV & Fire resistant.
- Looping pedestals reduce installation time by being built ready to go.

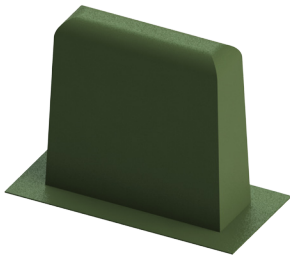
LP-77-MG

- Designed for looping 15kV primary cable.
- Dimensions at the top are 29" wide x 8 1/2" depth x 30 1/2" high with a 5" flange around the bottom perimeter for excellent stability.

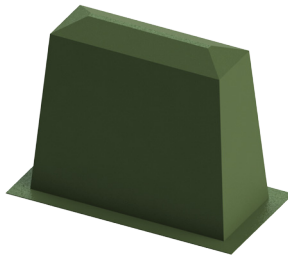
LP-88-MG

- Designed for looping 25kV primary cable.
- Dimensions at the top are 47 1/2" wide x 16" depth x 47 1/2" high with a 5" flange around the bottom perimeter for excellent stability.

Product	kV	W-Top Width	D-Top Depth	H-Height
LP-77-MG	15	29"	8.5"	30.5"
LP-88-MG	25	47.5"	16"	47.5"

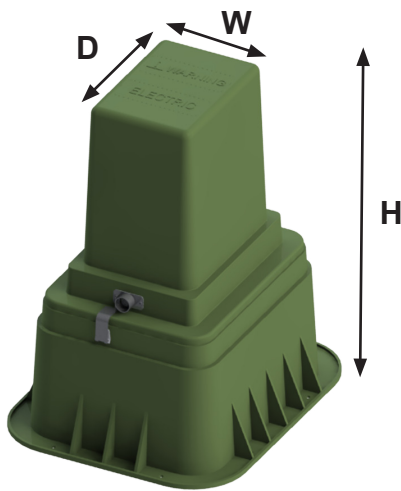


LP-77-MG



LP-88-MG

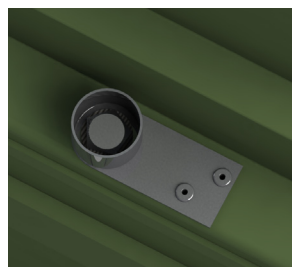
Pedestals - Secondary - Plastic - PSP Series



- PSP (horizontal double lock system with penta bolt and hasp).
- PSPX (vertical single lock system with penta bolt).
- PSPX2 (vertical double lock system with penta bolt and hasp bit).
- A flange on the back of the cover interlocks to the base.
- Designed for easy access to free standing secondary cables above grade.
- Made from Copolymer-Polypropylene.
- "WARNING & ELECTRIC", is imprinted on the top in raised lettering.
- Optional cable entrance cover available.
- It will not rust or corrode.



PSP horizontal double lock system with penta bolt and hasp



PSPX vertical single lock system with penta bolt



PSPX2 vertical lock system with penta bolt and hasp bit



PSPX vertical single lock system for the PSPX-101830-MG



PSPX2 vertical lock system with penta bolt and hasp bit PSPX2-101830-MG