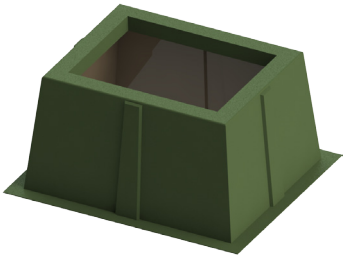


## Box Pads - Air-Filled Switchgear



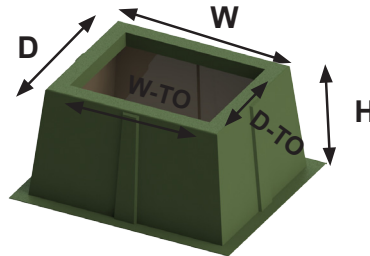
- Box pads for air-filled switchgear are designed to accommodate the switch's width and depth footprint.
- The fiberglass laminate is produced with chopped glass and woven roving.
- Box pads are constructed for time saving installations, no forms to make, just dig the hole, fill with a half foot of gravel, machine tamp it, level it, and install the box pad.
- Nordic recommends switchgear placement to be either flush to the edge of the box pad or within 2" in from the top flat surface edges. If you need help, please send the switchgear footprint and its weight to Nordic.
- After installing the box pad, backfill with loose material and use your foot to tamp the material around it.
- 18" to 36" high models provide extra cable training in case of an elbow failure. Just cut off the damaged piece and use the extra slack to install the new elbow.
- UV & Fire resistant.

### Guideline for determining product size:

GS-50-40-32-MG-41x31 = 50"W x 40"D x 32"H

MG = Munsell Green

41x31 = 41"W x 31"D Top Opening

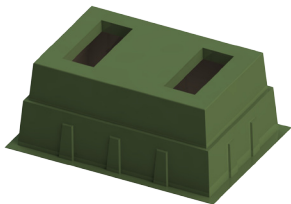


Product	W-Width	D-Depth	H-Height	W-Top Opening	D-Top Opening
GS-106-74-48-MG-96.5x62	106"	74"	48"	96.5"	62"
GS-124-74-36-MG-114.5x62	124"	74"	36"	114.5"	62"
GS-50-30-20-MG-28x22	50"	30"	20"	28"	22"
GS-50-40-32-MG-41x31	50"	40"	32"	41"	31"
GS-50-50-54-MG-42x42	50"	50"	54"	42"	42"
GS-54-32-26-MG-46x24	54"	32"	26"	46"	24"
GS-54-44-15-MG-42x32	54"	44"	15"	42"	32"
GS-54-44-32-MG-42.5x31	54"	44"	32"	42.5"	31"
GS-55-37-36-MG-43x25	55"	37"	36"	43"	25"
GS-56-56-20-MG-44x44	56"	56"	20"	44"	44"
GS-57-44-32-MG-47x34	57"	44"	32"	47"	34"
GS-64-37-36-MG-56x29.5	64"	37"	36"	56"	29.5"
GS-65-44-36-MG-54.5x36	65"	44"	36"	54.5"	36"
GS-65-56-36-MG-50x40	65"	56"	36"	50"	40"
GS-67-61-36-MG-59x51	67"	61"	36"	59"	51"
GS-67-61-48-MG-59x51	67"	61"	48"	59"	51"
GS-69-47-36-MG-61x39	69"	47"	36"	61"	39"
GS-69-65-36-MG-58x51	69"	65"	36"	58"	51"
GS-75-45-36-MG-61x31.5	75"	45"	36"	61"	31.5"
GS-75-48-36-MG-61x31.5	75"	48"	36"	61"	31.5"
GS-75-69-36-MG-65x59	75"	69"	36"	65"	59"
GS-75-73-36-MG-67x62	75"	73"	36"	67"	62"
GS-77-69-36-MG-66x58	77"	69"	36"	66"	58"
GS-80-36-36-MG-72x30	80"	36"	36"	72"	30"
GS-80-54-36A-MG-71.5x45.5	80"	54"	36"	71.5"	45.5"
GS-80-54-36B-MG-62x34	80"	54"	36"	62"	34"
GS-84-66-36-MG-65x51	84"	66"	36"	65"	51"
GS-86-78-36-MG-70.5x63	86"	78"	36"	70.5"	63"

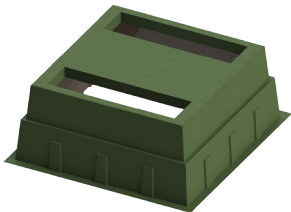
## Box Pads - Air-Filled Switchgear

Product	W-Width	D-Depth	H-Height	W-Top Opening	D-Top Opening
Continued from page 8					
GS-86-84-36 2 PIECE-MG-73x76	86"	84"	36"	73"	76"
GS-89-84-36 2 PIECE-MG-73x76	89"	84"	36"	73"	76"
GS-89-84-36-MG-75x76	89"	84"	36"	75"	76"
GS-96-54-36-MG-86x44	96"	54"	36"	86"	44"

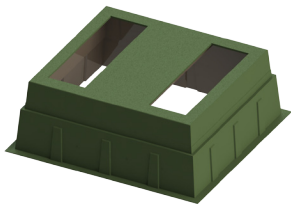
## Box Pads - Oil-Filled Switchgear



GS-75-47-36RT-2O-MG



GS-75-73-36RT-2O-MG



GS-86-78-36RT-2O-MG

- Box pads for oil-filled switchgear are designed to support the weight switchgear's oil tank and accommodate the switch's cable openings.
- The fiberglass laminate is produced with chopped glass and woven roving.
- Box pads are constructed for time saving installations, no forms to make, just dig the hole, fill with a half foot of gravel, machine tamp it, level it, and install the box pad.
- Please send your switchgear footprint to Nordic to determine the correct box pad for your application.
- After installing the box pad, backfill with loose material and use your foot to tamp the material around it.
- 36" high models provide extra cable training in case of an elbow failure. Just cut off the damaged piece and use the extra slack to install the new elbow.
- UV & Fire resistant.

### Guideline for determining product size:

GS-75-47-36RT-2O-MG = 75"W x 47"D x 36"H,  
 2O = 2 Top Openings,  
 MG = Munsell Green

Product
GS-106-74-36RT-2O-MG
GS-124-74-36RT-2O-MG
GS-75-47-36RT-2O-MG
GS-75-73-36RT-2O-MG
GS-86-78-36RT-2O-MG