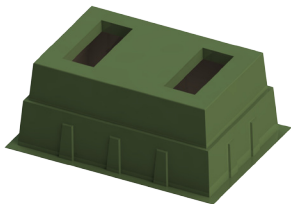


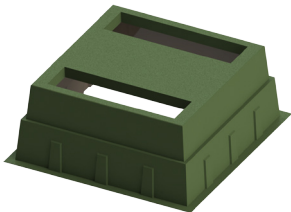
## Box Pads - Air-Filled Switchgear

Product	W-Width	D-Depth	H-Height	W-Top Opening	D-Top Opening
Continued from page 8					
GS-86-84-36 2 PIECE-MG-73x76	86"	84"	36"	73"	76"
GS-89-84-36 2 PIECE-MG-73x76	89"	84"	36"	73"	76"
GS-89-84-36-MG-75x76	89"	84"	36"	75"	76"
GS-96-54-36-MG-86x44	96"	54"	36"	86"	44"

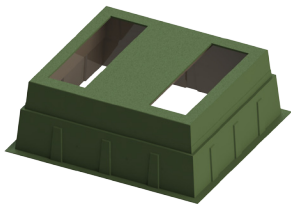
## Box Pads - Oil-Filled Switchgear



GS-75-47-36RT-2O-MG



GS-75-73-36RT-2O-MG



GS-86-78-36RT-2O-MG

- Box pads for oil-filled switchgear are designed to support the weight switchgear's oil tank and accommodate the switch's cable openings.
- The fiberglass laminate is produced with chopped glass and woven roving.
- Box pads are constructed for time saving installations, no forms to make, just dig the hole, fill with a half foot of gravel, machine tamp it, level it, and install the box pad.
- Please send your switchgear footprint to Nordic to determine the correct box pad for your application.
- After installing the box pad, backfill with loose material and use your foot to tamp the material around it.
- 36" high models provide extra cable training in case of an elbow failure. Just cut off the damaged piece and use the extra slack to install the new elbow.
- UV & Fire resistant.

### Guideline for determining product size:

GS-75-47-36RT-2O-MG = 75"W x 47"D x 36"H,  
 2O = 2 Top Openings,  
 MG = Munsell Green

Product
GS-106-74-36RT-2O-MG
GS-124-74-36RT-2O-MG
GS-75-47-36RT-2O-MG
GS-75-73-36RT-2O-MG
GS-86-78-36RT-2O-MG