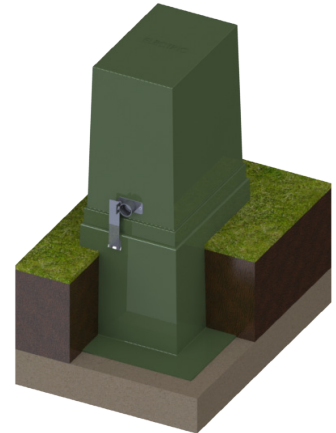
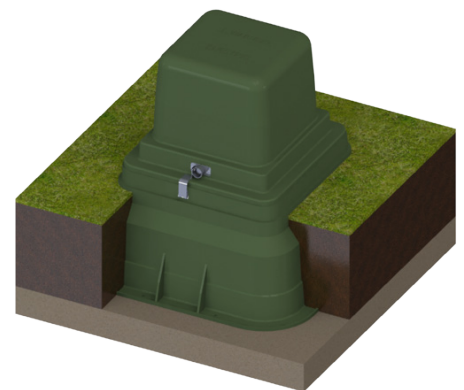


PRMC, PSP, PSPF Installation Instructions:

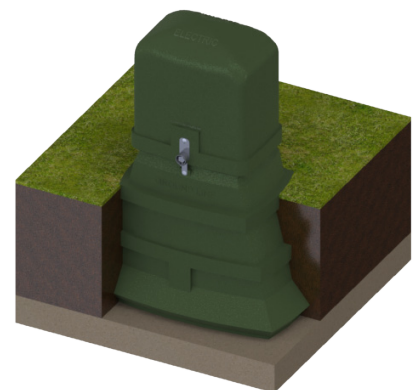
1. Measure the bottom width and depth of the pedestal's flanges.
2. Measure 3" down from the bottom of the locking system, mark that spot.
3. Then measure from that spot to the bottom of the pedestal, that's the maximum burial depth.
4. Dig a hole approximately 4" deeper than the maximum burial depth and 6" wider than the bottom flange dimensions of the pedestal.
5. Add 4" of gravel to the bottom of the hole, machine tamp and level it.
6. Make sure the lid is fastened and tighten the penta-head bolt(s).
7. Lower the pedestal into the hole.
8. Using a level, ensure that the pedestal is level and plumb. If not level, add or remove gravel, re-tamp and level again.
9. Backfill evenly around the pedestal perimeter with loose dirt, no chunks of dirt or rocks, no machine tamping.



PRMC



PSP



PSPF



Nordic Fiberglass, Inc.