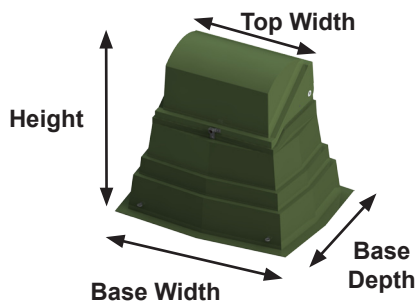


Pedestals - Tap - Fiberglass



- Tap pedestals allow for terminating 600V conductors in residential and small commercial applications.
- The fiberglass laminate is produced with chopped glass and woven roving.
- 600V connectors are manufactured from high strength aluminum alloy to provide premium electrical and mechanical performance.
- Easy access to connectors is made available in these pedestals.
- Connectors covered with an insulating boot.
- Will not rust or corrode.
- Stainless steel and Aluminum hardware provide long term protection against rust.
- UV & Fire resistant.

ND-3624 Series

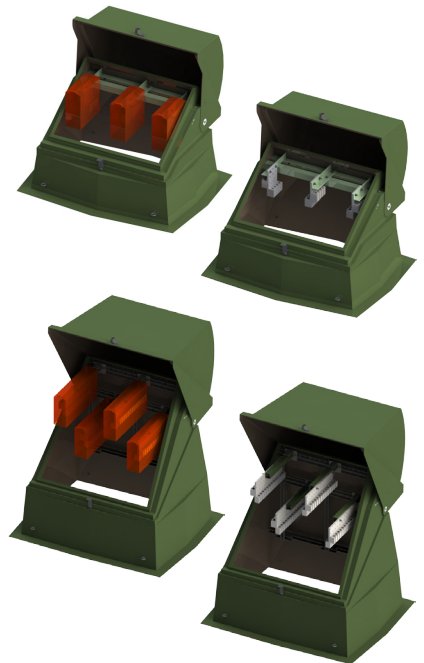
Features & Benefits:

- Connectors have a conductor range of 750MCM down to 1/0 wire.
- The ND-3624 series tap pedestals in heights of 36", 42", and 54" can accommodate up to 3 or 4 standard connectors with either 8, 10, or 12 ports. (Lay-in connectors also available).

ND-403264

Features & Benefits:

- ND-403264-MG-4HDB-L24750-X is the largest tap pedestal Nordic makes.
- It stands 64" high, 40" wide at the top, and it's 32" deep.
- It has an adjustable sturdy strut system can be moved vertically and horizontally to a position that works for you.
- These 4 heavy duty fiberglass arms each accommodate one heavy duty 24 port 750MCM connector.
- Fiberglass arms provide high dielectric insulating properties.
- Conductor wire range is 750MCM down to 1/0.



Product	Top Width	Base Width	Base Depth	Height
 ND-301830-MG-X-L750350P-X	30"	30"	18"	30.5"
 ND-362436-MG-3HDB-X-X	36.5"	55"	42"	36.5"

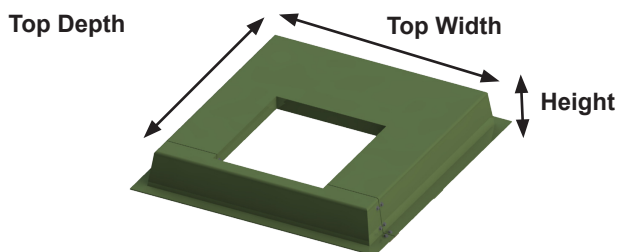
Pedestals - Tap - Fiberglass

Product	Top Width	Base Width	Base Depth	Height
 <p>ND-362436-MG-4HDB-X-X</p>	36.5"	55"	42"	36.5"
 <p>ND-362442-MG-3HDB-X-X</p>	36.5"	59"	46"	42.5"
 <p>ND-362442-MG-4HDB-X-X</p>	36.5"	59"	46"	42.5"
 <p>ND-362454-MG-3HDB-X-X</p>	36.5"	64.5"	51.5"	55"

Pedestals - Tap - Fiberglass

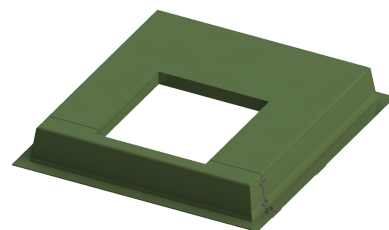
Product	Top Width	Base Width	Base Depth	Height
 ND-362454-MG-4HDB-X-X	36.5"	64.5"	51.5"	55"
 ND-403264-MG-4HDB-X-X	39.5"	64.5"	51.5"	63.5"

Replacement - Transformer Pads



- The RTP-42.5-45.5-7-MG-22x24 can be installed directly over rusted metal ground sleeves or after removal of the damaged sleeves.
- Front partition is removable for electrical cables to slide through during installation without disconnecting the power.
- The two-piece unit is joined by driving 3/8" stainless steel bolts into the floating nut assemblies on the sides and flange of the sleeve.
- The fiberglass laminate is produced with chopped glass and woven roving.
- UV & Fire resistant.

Product	W-Top Width	D-Top Depth	H-Height
RTP-42.5-45.5-7-MG-22x24	42.5"	45.5"	7"



RTP-42.5-45.5-7-MG-22x24