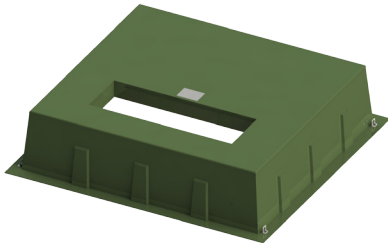
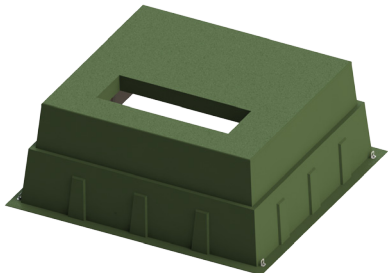


## Box Pads - Three Phase Transformer - 9K



GS-75-69-18RT-9K-MG-48x16

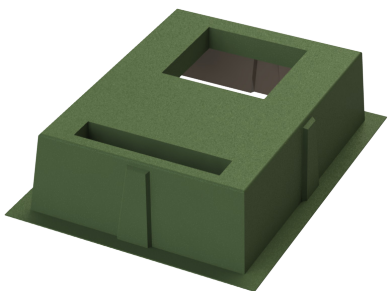


GS-75-69-36RT-9K-MG-48x16

- The 9K is a three phase transformer series box pad available in 18" and 36" heights designed for strength without excessive weight.
- The fiberglass laminate is produced with chopped glass and woven roving.
- If the transformer is under 9,000 lbs., and it fits, that's it.
- If the transformer is heavier than 9,000 lbs., please send the transformer footprint and its weight to Nordic.
- Box pads are constructed for time saving installations, no forms to make, just dig the hole, fill with a half foot of gravel, machine tamp it, level it, and install the box pad.
- After installing the box pad, backfill with loose material and use your foot to tamp the material around it.
- 18" to 36" high models provide extra cable training in case of an elbow failure. Just cut off the damaged piece and use the extra slack to install the new elbow.
- UV & Fire resistant.

Product	W-Width	D-Depth	H-Height	W-Top Opening	D-Top Opening
GS-75-69-18RT-9K-MG-48x16	75"	69"	18"	48"	16"
GS-75-69-36RT-9K-MG-48x16	75"	69"	36"	48"	16"

## Box Pads - Transformer/Meter/Switch (TMS)



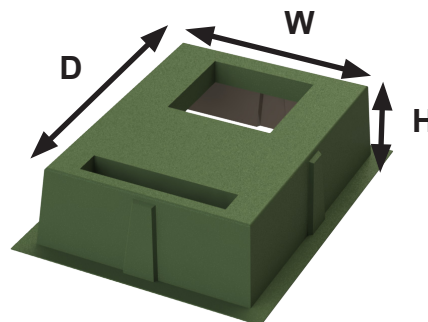
- TMS units are designed for 25kVA to 167kVA single phase transformers and various models of meter switches.
- The fiberglass laminate is produced with chopped glass and woven roving.
- Provides a raceway between the transformer and meter.
- Allows for Net Metering.
- Box pads are constructed for time saving installations, no forms to make, just dig the hole, fill with a half foot of gravel, machine tamp it, level it, and install the box pad.
- Please send your switchgear footprint to Nordic to determine the correct box pad for your application.
- After installing the box pad, backfill with loose material and use your foot to tamp the material around it.
- 15" to 20" high models provide extra cable training in case of an elbow failure. Just cut off the damaged piece and use the extra slack to install the new elbow.
- UV & Fire resistant.

### Guideline for determining product size:

GS-37-52-15-TMS-MG = 37"W x 52"D x 15"H

TMS = Transformer Meter Switch

MG = Munsell Green



Product	W-Width	D-Depth	H-Height
GS-37-52-15-TMS-MG	37"	52"	15"
GS-72-40-18-TMS-MG	72"	40"	18"
GS-80-36-36-20-MG-TS	80"	36"	20"