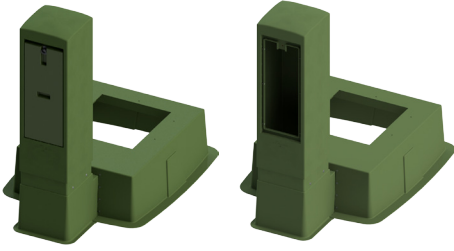
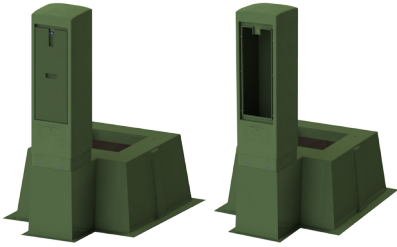


Box Pads - Transformer/Meter



CBP-37-43-15A-MP-MG-22x24



GS-37-39-24-MP-MG-22x22

- Install your transformer and meter enclosures on the CBP-37-43-15A with a 22" x 24" top opening x 15" high or the GS-37-39-24 transformer box pad with a 22" x 22" top opening x 24" high (GS-37-39-24-MP-22x22).
- Light weight, yet built strong and durable for single phase transformers from 25kVA up to 167kVA
- The box pad's extension accommodates one MPP-141455-MG-X meter pedestal. (Assembly is required).
- Three optional six port 350 MCM connectors, (L6350), are available from factory for mounting in the meter pedestal.
- The box pad's open underneath interior cavity provides a raceway between the single phase transformer and the meter pedestal.
- The 15" or 24" high box pads are constructed for time saving installations, no forms to make, just dig the hole, fill with a half foot of gravel, machine tamp it, level it, and install the box pad.
- After installing the box pad, backfill with loose material and use your foot to tamp the material around it.
- 15" or 24" high models provide extra cable training in case of an elbow failure. Just cut off the damaged piece and use the extra slack to install the new elbow.
- GS-37-39-15-SP-MG-22x22 (no bracket or connectors installed)

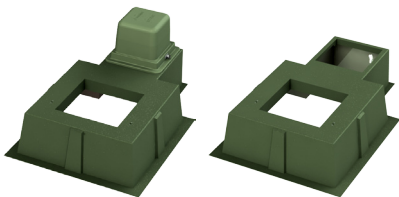
Product

CBP-37-43-15A-MP-MG-22x24

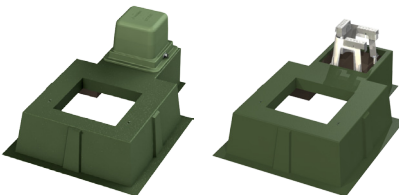
GS-37-39-24-MP-MG-22x22



Box Pads - Transformer/Secondary



GS-37-39-15-SP-MG-22x22



GS-37-39-15-SP-L6350-MG-22x22

- Install your transformer and meter enclosures on the GS-37-39 Series Transformer box pads with a 22" x 22" top opening.
- The box pad's built in extension accommodates one connector bracket with three 6 port 350 MCM connectors with plastic covers and one PSPT-151515-MG lid. (Assembly is required)
- The 15" high box pad is constructed for time saving installations, no forms to make, just dig the hole, fill with a half foot of gravel, machine tamp it, level it, and install the box pad.
- Light weight, yet built strong and durable for single phase transformers from 25kVA up to 167kVA
- GS-37-39-15-SP-MG-22x22 (no bracket or connectors installed)

Product

GS-37-39-24-MP-MG-22x22

GS-37-39-15-SP-L6350-MG-22x22