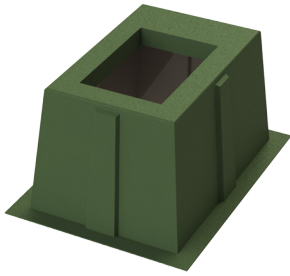


## Box Pads - Single Phase Transformer



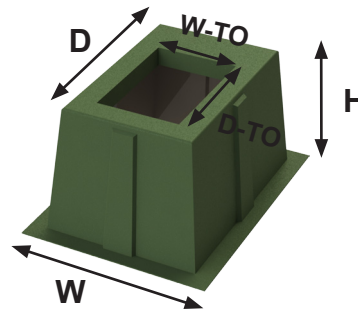
- Light weight, yet built strong and durable for single phase transformers from 25kVA up to 167kVA, weighing up to 2,000 lbs. For heavier single phase transformers contact the factory for assistance.
- The fiberglass laminate is produced with chopped glass and woven roving. (CBP is compression molded)
- Box pads are constructed for time saving installations, no forms to make, just dig the hole, fill with a half foot of gravel, machine tamp it, level it, and install the box pad.
- Nordic recommends transformer placement to be either flush to the edge of the box pad or within 3" in from the top flat surface edges. If you need help, please send the transformer footprint and its weight to Nordic.
- After installing the box pad, backfill with loose material and use your foot to tamp the material around it.
- 15" to 48" high models provide extra cable training in case of an elbow failure. Just cut off the damaged piece and use the extra slack to install the new elbow.
- Optional transformer hold-down brackets available too.
- UV & Fire resistant.

### Guideline for determining product size:

GS-24-37-25-MG-16x24 = 24"W x 37"D x 25"H

MG = Munsell Green

16x24 = 16"W x 24"D Top Opening

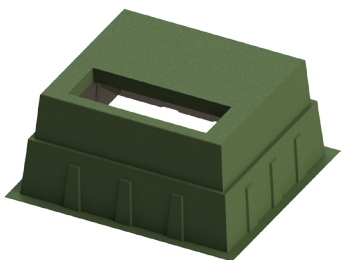


Product	W-Width	D-Depth	H-Height	W-Top Opening	D-Top Opening
CBP-37-43-15A-MG-22x24	37"	43"	15"	22"	24"
CBP-37-43-15B-MG-20x20	37"	43"	15"	20"	20"
CBP-37-43-15C-MG-21x12	37"	43"	15"	21"	12"
CBP-37-43-15F-MG-25.5x30	37"	43"	15"	25"	30"
CBP-37-43-24A-MG-22x24	37"	43"	24"	22"	24"
CBP-37-43-24C-MG-21x12	37"	43"	24"	21"	12"
CBP-37-43-24F-MG-26x30	37"	43"	24"	26"	30"
GS-25-40-18-MG-15.5x11.5	25"	40"	18"	15.5"	11.5"
GS-25-40-24-MG-14x10	25"	40"	24"	14"	10"
GS-28-28-15-MG-20x20	28"	28"	15"	20"	20"
GS-34-30-25-MG-22x18	34"	30"	25"	22"	18"
GS-34-34-15A-MG-22x24	34"	34"	15"	22"	24"
GS-37-43-32A-CE-2-MG-26x32	37"	43"	32"	26"	32"
GS-37-43-32B-CE-2-MG-20x20	37"	43"	32"	20"	20"
GS-37-43-32C-CE-2-MG-22x24	37"	43"	32"	22"	24"
GS-37-43-42A-MG-25x31	37"	43"	42"	25"	31"
GS-37-43-48-MG-25x31	37"	43"	48"	25"	31"
GS-37-46-15A-MG-22x24	37"	46"	15"	22"	24"
GS-37-48-32A-CE-2-MG-26x31	37"	48"	32"	26"	31"
GS-37-52-15-MG-23x24	37"	52"	15"	23"	24"
GS-42-42-18-MG-25x25	42"	42"	18"	25"	25"
GS-42-42-32-MG-25x25	42"	42"	32"	25"	25"
GS-42-48-16-MG-26x12	42"	48"	16"	26"	12"
GS-42-48-18-MG-25x25	42"	48"	18"	25"	25"
GS-42-48-24-MG-26x12	42"	48"	24"	26"	12"
GS-42-48-32C-MG-22x24	42"	48"	32"	22"	24"

## Box Pads - Single Phase Transformer

Product	W-Width	D-Depth	H-Height	W-Top Opening	D-Top Opening
GS-42-48-32-MG-25x25	42"	48"	32"	25"	25"
GS-42-48-32-MG-26x12	42"	48"	32"	26"	12"

## Box Pads - Three Phase Transformer



- Nordic Fiberglass RT (Reinforced Top) series box pads for three phase transformers, available in 18" and 36" heights, are designed for strength without excessive weight.
- The fiberglass laminate is produced with chopped glass and woven roving.
- Box pads are constructed for time saving installations, no forms to make, just dig the hole, fill with a half foot of gravel, machine tamp it, level it, and install the box pad.
- Nordic recommends transformer placement to be either flush to the edge of the box pad or within 3" in from the top flat surface edges. If you need help, please send the transformer footprint and its weight to Nordic.
- Please also contact Nordic if your transformer is greater than 500kVA or weighs more than 6,000 lbs.
- After installing the box pad, backfill with loose material and use your foot to tamp the material around it.
- 18" to 36" high models provide extra cable training in case of an elbow failure. Just cut off the damaged piece and use the extra slack to install the new elbow.
- UV & Fire resistant.

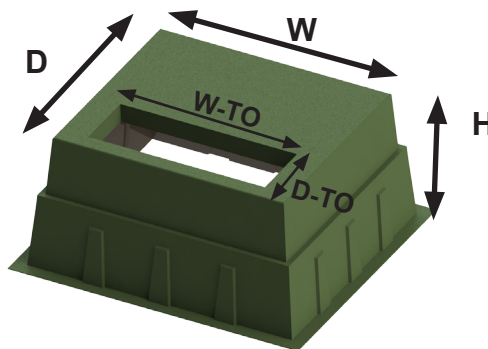
### Guideline for determining product size:

GS-47-47-20RT-MG-40x13 = 47"W x 47"D x 20"H

RT=Reinforced Top

MG=Munsell Green

40x13=40"W x 13"D Top Opening



Product	W-Width	D-Depth	H-Height	W-Top Opening	D-Top Opening
GS-111-44-36RT-3O-MG-20x11	111"	44"	36"	20" (3 openings)	11" (3 openings)
GS-111-44-36RT-MG-93x11	111"	44"	26"	93"	11"
GS-47-47-20RT-MG-40x13	47"	47"	20"	40"	13"
GS-54-44-32RT-MG-41x15	54"	44"	32"	41"	15"
GS-54-52-15RT-MG-41x15	54"	52"	15"	41"	15"