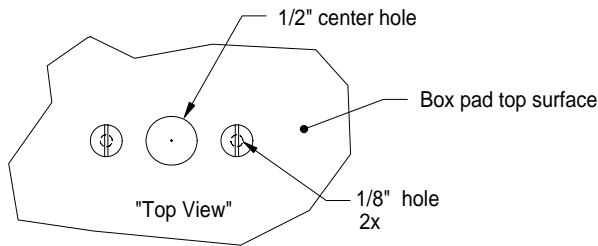
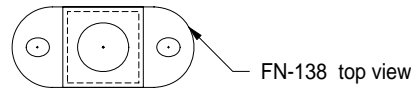
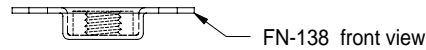
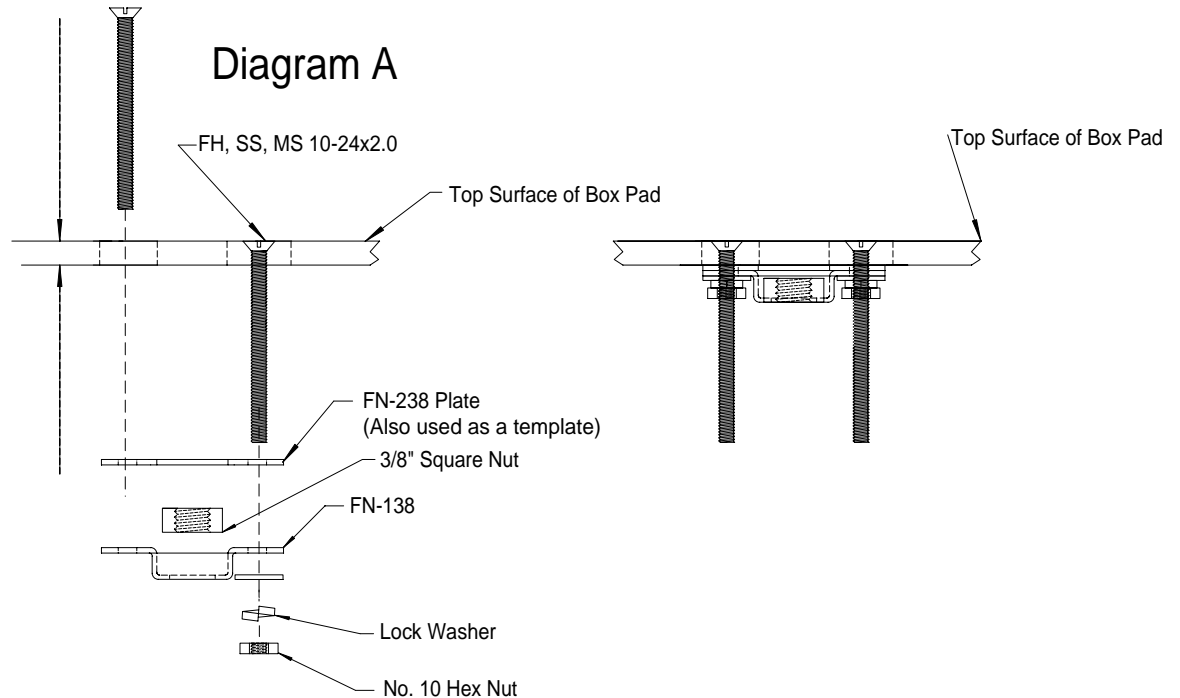


# Installation Instructions:

1. Mark each center hole for the FN-138 on the box pad.
2. Center the FN-138 Plate's center hole over the marked diagram holes (do each one separately).
3. From the marked centers, drill a 1/2" hole through the box pad.
4. Center the FN-138 Plate over the 1/2" hole.
5. Using the FN-138 Plate as a template, take the 1/8" drill bit and drill 1/8" holes along each side of the FN-138 plate.
6. Take the 1/2" drill bit and counter-sink the two 1/8" holes. (2 - 1/8" holes per FN-138 plate)
7. Remove the 1/2" bolt and begin installing the No. 10 bolt and flat washer, lock washer, and No. 10 hex nut. See Diagram A.



## Diagram A

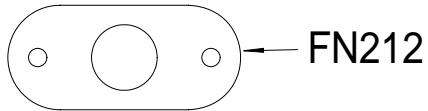


		NORDIC FIBERGLASS, INC. Warren, MN 56762	
		Application Drawing Field Installation of:	
DRAWN: 6/26/96		Floating Nut Assembly FN-38	
SCALE: 1:2		SHEET 1 OF 1	
Drawn By: G.D.M.			
Date	Appv'd by	Description	
7/2/97			

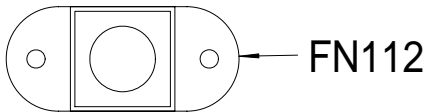
NOTICE: This document and all of the information, data, and designs thereon are the property of Nordic Fiberglass, Inc. Consent for the retention and use of this document is granted to persons other than Nordic Fiberglass, Inc. only on the conditions that the document and all of its contents will be held in strict confidence. This document is not to be reproduced in whole or in part for manufacture or procurement from sources other than Nordic Fiberglass, Inc. without the written permission of Nordic Fiberglass, Inc.

# Installation Instructions:

1. Take the template and mark each hole for the FN-212 on the box pad.
2. Center the FN-212 Plate's center hole over the marked diagram holes (do each one separately).
3. From the marked centers, drill a 5/8" hole through each mark.
4. Take the 1/2" bolt and put it through the center of the FN-212 plate to hold it in place.
5. Using the FN-212 as a template, take the 1/8" drill bit and drill 1/8" holes along each side of the FN-138 plate.
6. Take the 1/2" drill bit and counter-sink the two 1/8" holes.
7. Remove the 1/2" bolt and begin installing the No. 10 bolt and flat washer, lock washer, and No. 10 hex nut. See Diagram A.



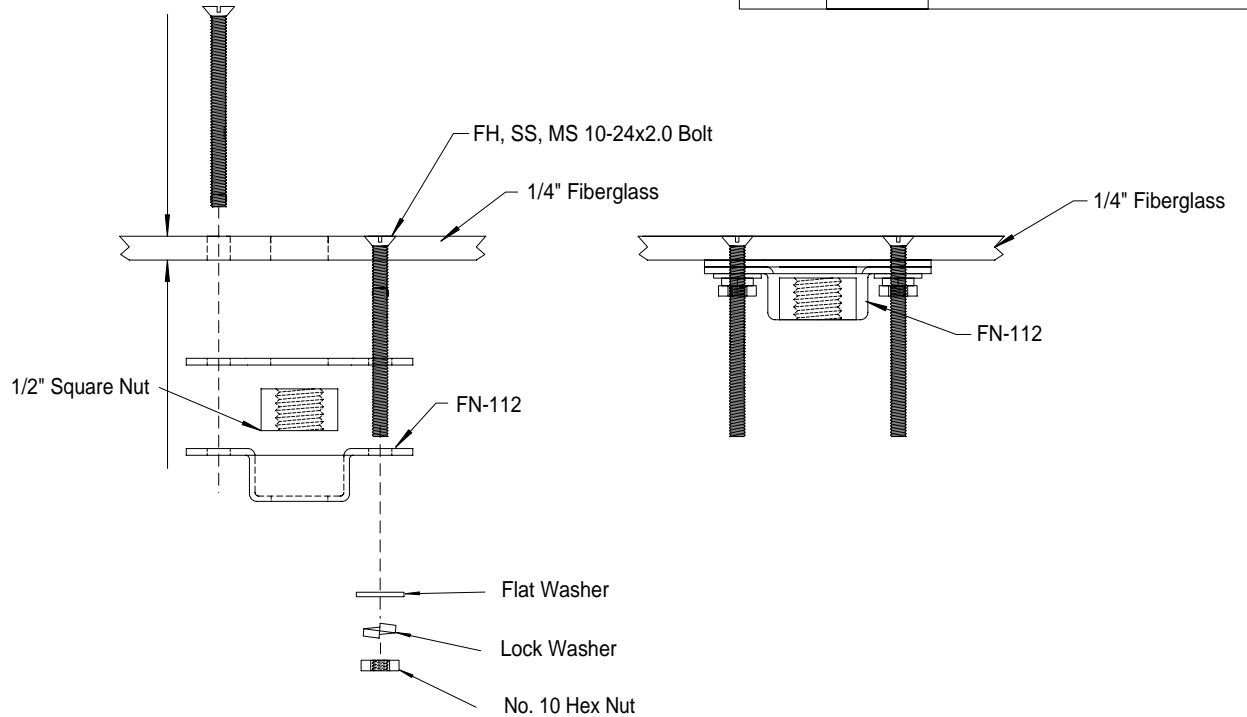
FN212



FN112



## Diagram A



NORDIC FIBERGLASS, INC.  
Warren, MN 56762

Application Drawing

DRAWN: 6/26/96

Field Installation of:

SCALE: 1:2

Floating Nut Assembly FN-12

Drawn By: G.D.M.

SHEET 1 OF 1

Date

App'v'd by

Description

08/07/98

NOTICE: This document and all of the information, data, and designs thereon are the property of Nordic Fiberglass, Inc. Consent for the retention and use of this document is granted to persons other than Nordic Fiberglass, Inc. only on the conditions that the document and all of its contents will be held in strict confidence. This document is not to be reproduced in whole or in part for manufacture or procurement from sources other than Nordic Fiberglass, Inc. without the written permission of Nordic Fiberglass, Inc.