



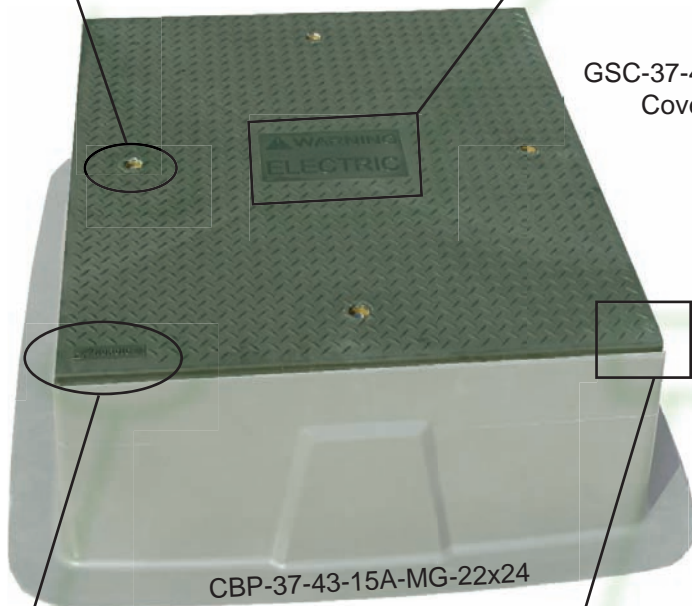
Standard Cover GSC-65-44-MG



Four brass penta-head recesses are installed for securing the cover to the box pad.

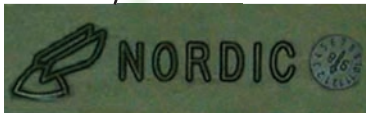


The word "WARNING ELECTRIC" is imprinted on every GSC-37-43 cover.



GSC-37-43-MG Cover

CBP-37-43-15A-MG-22x24



The Nordic name, logo, and year of manufacture are on every GSC-37-43-MG.



Cold Press Molding:

Cold press molding, a semi-open molding process, requires lighter duty, matched steel tools mounted into a press. Reinforcements, usually continuous filament mats (CFM), are placed into the tool and a highly filled polyester resin is poured onto them. The press is closed and the part is cured. The process requires lower pressures, 15 - 100 lb-in², and temperatures averaging 130°F (55°C). Cycle times are in the range of 6 - 7 minutes. Other glass fiber fabrics, mats, veils and pre forms are also used. The GSC-37-43 cover is made by this process

Nordic Covers

Standard Cover Features:

- The exterior is completely covered with gel-coat for superior weatherability and protection from ultraviolet light. The standard color is Munsell green.
- The word "ELECTRIC" can be printed on the cover for an additional charge.
- Nordic covers are available for all box pads and ground sleeves that Nordic produces.
- The standard cover is fabricated of one layer of 1/2" plywood encapsulated in fiberglass, using fire-retardant resin and chopped glass and 18 ounce woven roving reinforcement.
- Four brass penta-head recesses are installed for securing the cover to the box pad.
- Covers come with four 3/8" x 1 1/2" stainless steel penta-headbolts.
- For larger sized covers, two layers of 1/2" plywood are standard, as are six to eight pentahead recesses and bolts.
- For retrofitting to box pads or ground sleeves that were not furnished with inserts, Nordic can provide floating nut inserts of stainless steel in 3/8" and 1/2" sizes to allow the installation of the cover.

GSC-37-43 Features:

- The GSC-37-43 fits all CBP & GS-37-43 box pads in all heights.
- The top of the cover is a textured non-skid surface, which provides a safe operating platform in all types of weather.
- The Munsell green UV stabilized pigment is permanently molded into the cover and will not rust, corrode, or peel.

