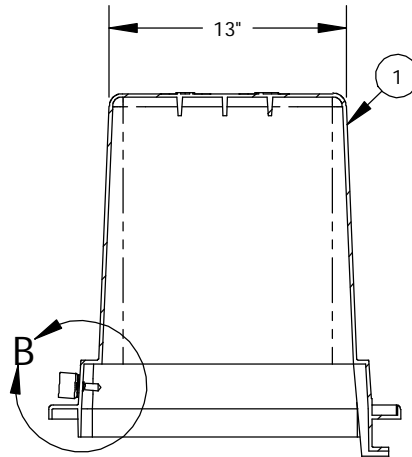
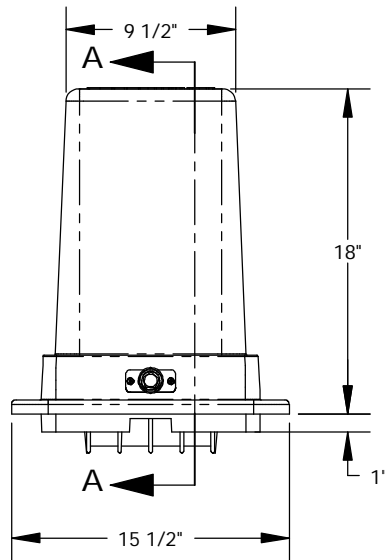
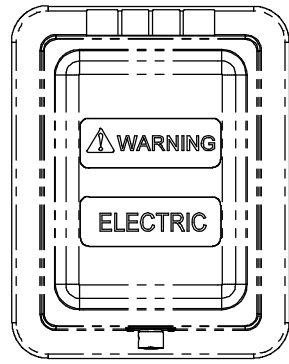
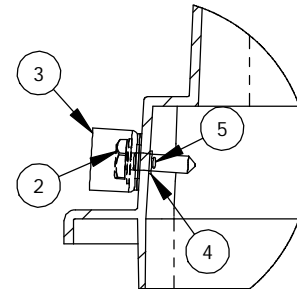


ITEM NO.	PART NUMBER	DESCRIPTION	QTY
1	03514.93	PSPT-91318-MG-NH	1
2	HAPE0005	PH-4,3/8-16X1.5 (WASHER & POINT)	1
3	HALO0037	P-109-A	1
4	HAWA0002	WASHER,BACKUP,SS	2
5	HARIO003	RIVET,FBS-66 .188DIA. X .375 GRIP	2

REVISIONS			
REV.	DESCRIPTION	DATE	APPROVED
REL-01		1/13/2006	



SECTION A-A  
SCALE 1 : 10



DETAIL B  
SCALE 1 : 4

PROPRIETARY AND CONFIDENTIAL  
THE INFORMATION CONTAINED IN THIS DRAWING IS THE SOLE PROPERTY OF NORDIC FIBERGLASS, INC. ANY REPRODUCTION IN PART OR AS A WHOLE WITHOUT THE WRITTEN PERMISSION OF NORDIC FIBERGLASS, INC. IS PROHIBITED.

Customer Name: N/A		
DIMENSIONS ARE IN INCHES TOLERANCES: ANGLES ± 1° FRACTIONAL ± 1/32 ONE PLACE DECIMAL ± .060 TWO PLACE DECIMAL ± .030 THREE PLACE DECIMAL ± .015		
MATERIAL		
DRAWN	NAME P.J.W.	DATE 01/12/06
CHECKED	---	---

**Nordic Fiberglass, Inc.**

21415 US Hwy 75 NW, Warren, MN 56762  
www.nordicfiberglass.com  
218-745-5095 ph. --- 218-745-4990 fax

PSPT-91318-MG

SIZE <b>A</b>	ITEM ID: <b>03514.98</b>	REV. <b>REL-01</b>
SCALE: 1:10		SHEET 1 OF 1