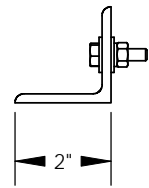
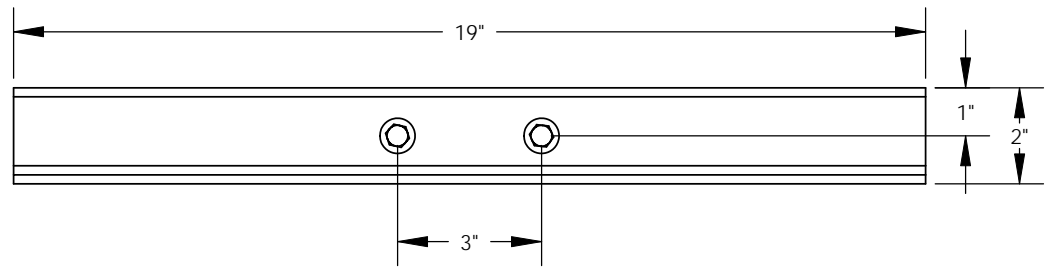
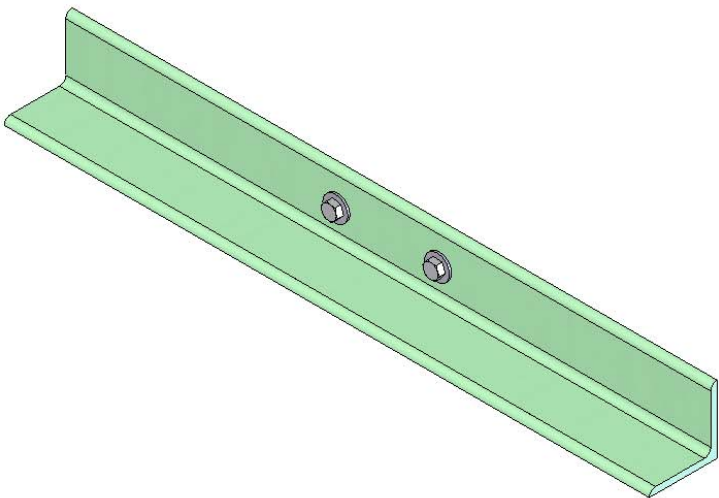


REVISIONS			
REV.	DESCRIPTION	DATE	APPROVED
REL-01		8/9/2007	R.L.J.
REL-02	Corrected Bolt Assemblies from 3/8" Carriage	7/6/2009	R.L.J.



NOTE:
Includes (2) 1/4x1.0 SST Hex Bolts,
(2) 1/4 SST Flat Washers, (2) 1/4 SST
Lock Washers, (2) 1/4 SST Nuts

Nordic Fiberglass, Inc.

21415 US Hwy 75 NW, Warren, MN 56762
www.nordicfiberglass.com
218-745-5095 ph. --- 218-745-4990 fax

P-51, 19 FIBERGLASS ANCHOR

PROPRIETARY AND CONFIDENTIAL
THE INFORMATION CONTAINED IN THIS DRAWING IS THE SOLE PROPERTY OF
NORDIC FIBERGLASS, INC. ANY REPRODUCTION IN PART OR AS A WHOLE
WITHOUT THE WRITTEN PERMISSION OF NORDIC FIBERGLASS, INC. IS PROHIBITED.

Customer Name: N/A		
DIMENSIONS ARE IN INCHES		
TOLERANCES: ANGLES $\pm 1^\circ$		
FRACTIONAL $\pm 1/2$		
ONE PLACE DECIMAL $\pm .060$		
TWO PLACE DECIMAL $\pm .030$		
THREE PLACE DECIMAL $\pm .015$		
MATERIAL		
	NAME	DATE
DRAWN	P.J.W.	08/09/07
CHECKED	---	--/--/--

SIZE	ITEM ID:	REV.
A	03150.00	REL-02
SCALE:1:4		SHEET 1 OF 1