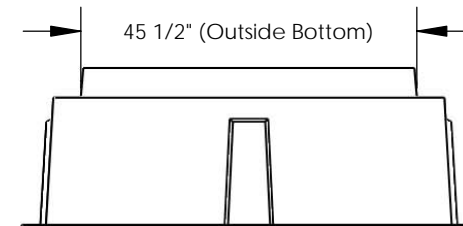
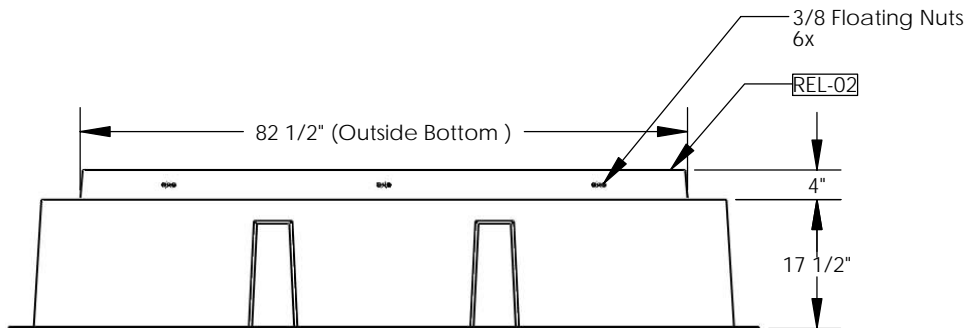
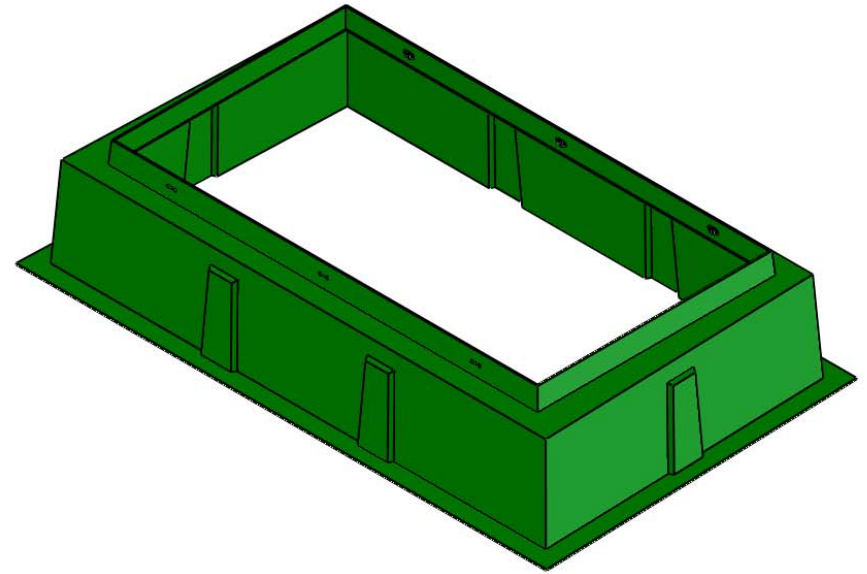
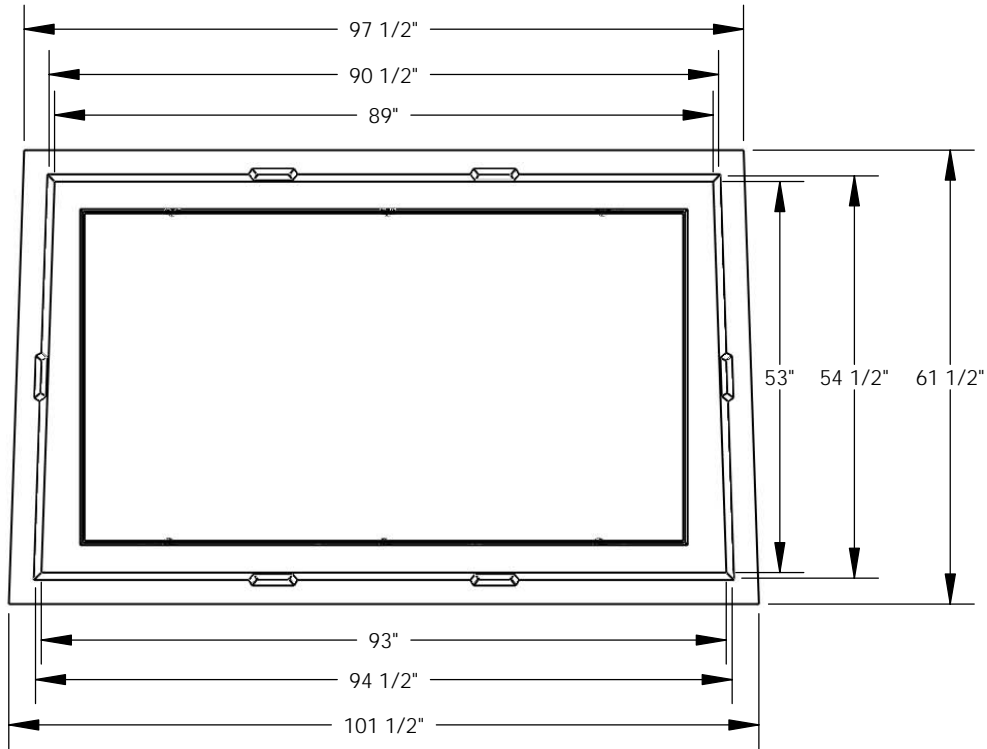


REVISIONS			
REV.	DESCRIPTION	DATE	APPROVED
REL-02	Changed Upturn to Square Opening	3/9/2007	R.L.J.



Includes:
 (6) 3/8-16x2.0 SST Bolts
 (6) 3/8 SST Flat Washers

Nordic Fiberglass, Inc.

21415 US Hwy 75 NW, Warren, MN 56762
 www.nordicfiberglass.com
 218-745-5095 ph. --- 218-745-4990 fax

ND-450-MG-18EXT

PROPRIETARY AND CONFIDENTIAL
 THE INFORMATION CONTAINED IN THIS DRAWING IS THE SOLE PROPERTY OF NORDIC FIBERGLASS, INC. ANY REPRODUCTION IN PART OR AS A WHOLE WITHOUT THE WRITTEN PERMISSION OF NORDIC FIBERGLASS, INC. IS PROHIBITED.

Customer Name: N/A		
DIMENSIONS ARE IN INCHES		
TOLERANCES: ANGLES $\pm 1^\circ$		
FRACTIONAL $\pm 1/2$		
ONE PLACE DECIMAL $\pm .060$		
TWO PLACE DECIMAL $\pm .030$		
THREE PLACE DECIMAL $\pm .015$		
DRAWN	NAME	DATE
CHECKED	---	--/--
	R.L.J.	03/09/07

SIZE	ITEM ID:	REV.
A	02990.13	REL-02
SCALE:1:32	SHEET 1 OF 1	