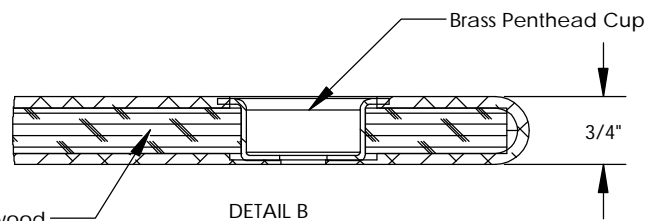
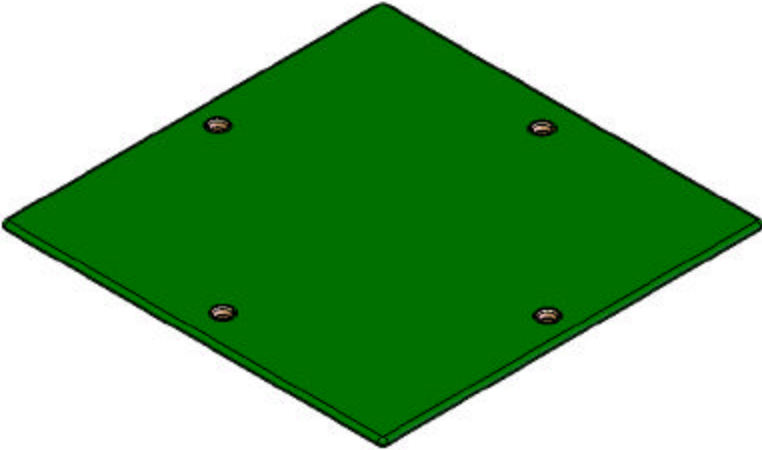
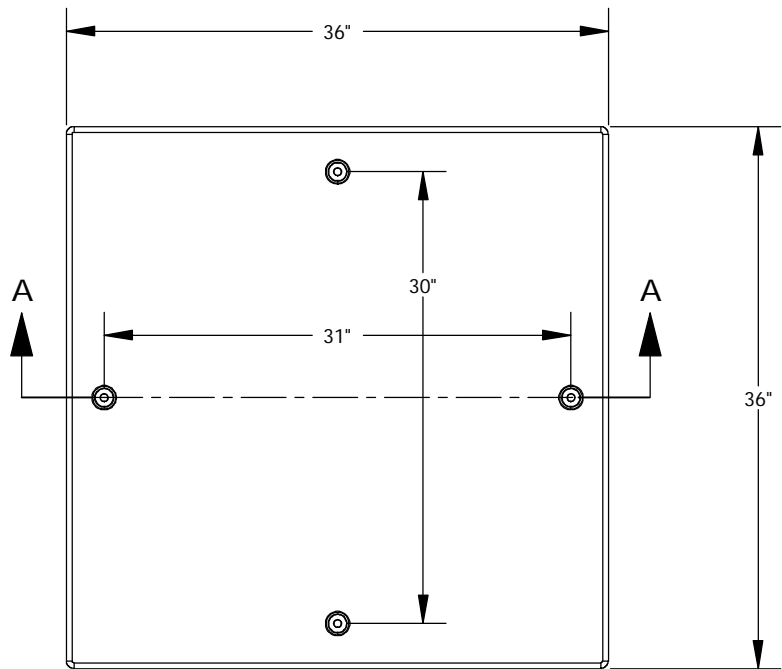


REVISIONS			
REV.	DESCRIPTION	DATE	APPROVED
REL-01		6/2/2006	



1/2" Encapsulated Plywood

DETAIL B
SCALE 1 : 2

Includes (4) 3/8" SST Pentahead Bolts

Nordic Fiberglass, Inc.
 21415 US Hwy 75 NW, Warren, MN 56762
 www.nordicfiberglass.com
 218-745-5095 ph. --- 218-745-4990 fax

PROPRIETARY AND CONFIDENTIAL
 THE INFORMATION CONTAINED IN THIS DRAWING IS THE SOLE PROPERTY OF
 NORDIC FIBERGLASS, INC. ANY REPRODUCTION IN PART OR AS A WHOLE
 WITHOUT THE WRITTEN PERMISSION OF NORDIC FIBERGLASS, INC. IS PROHIBITED.

Customer Name: N/A		MATERIAL		GSC-36-36-MG	
DIMENSIONS ARE IN INCHES		NAME		SIZE	ITEM ID:
TOLERANCES: ANGLES ± 1°		DATE		A	02110.00
FRACTIONAL ± 1/2		P.J.W.		SCALE: 1:12	REV. REL-01
ONE PLACE DECIMAL ±.060		06/02/06			SHEET 1 OF 1
TWO PLACE DECIMAL ±.030		---			
THREE PLACE DECIMAL ±.015		---			