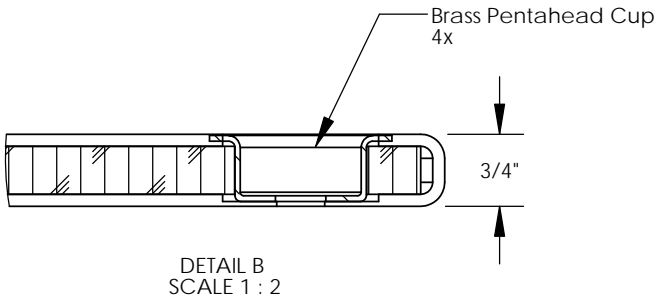
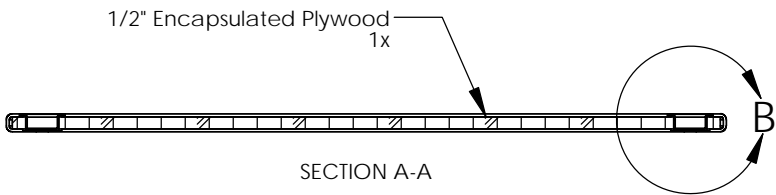
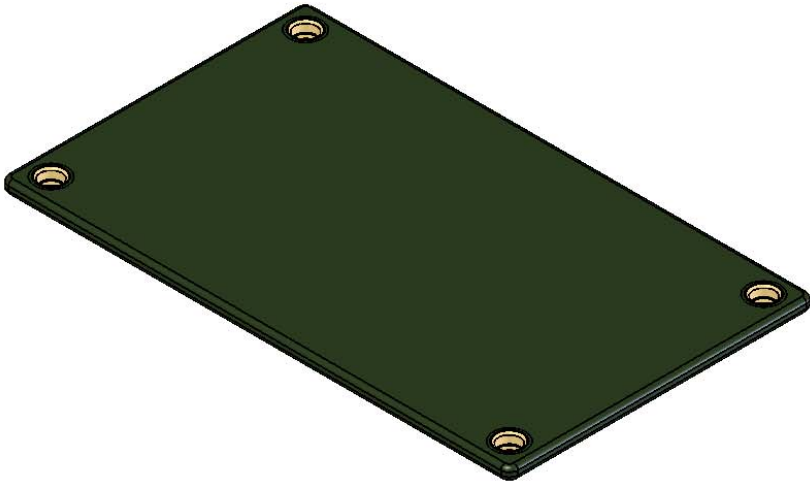
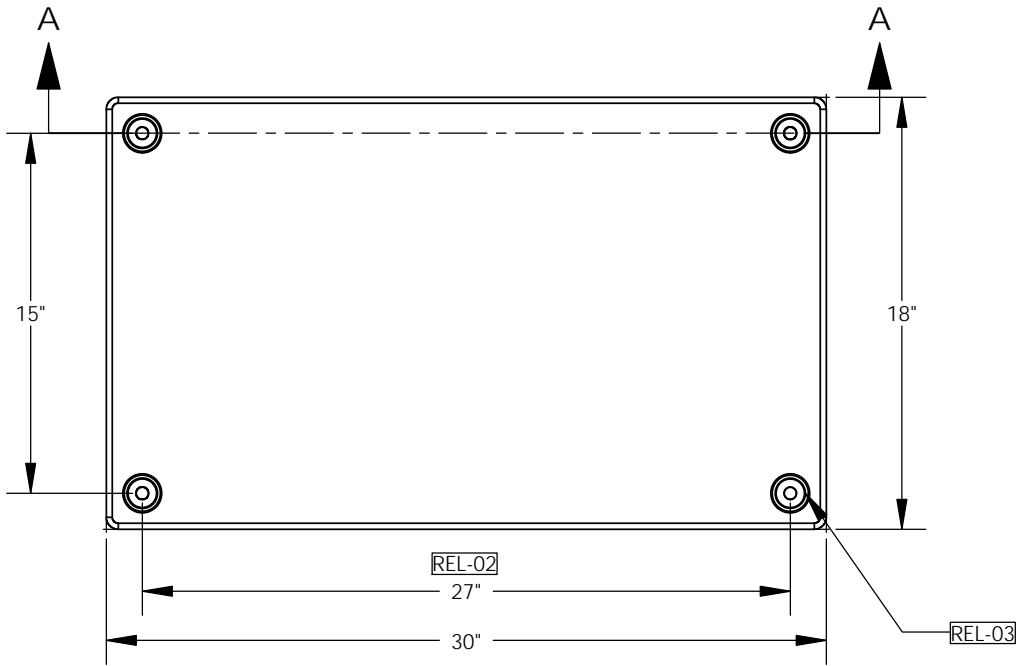


| REVISIONS | | | |
|-----------|---|-----------|----------|
| REV. | DESCRIPTION | DATE | APPROVED |
| REL-01 | | 6/2/2006 | |
| REL-02 | Changed Penta Cup Spacing From 26 3/4" | 4/7/2010 | R.L.J. |
| REL-03 | Updated Pentacup Placement and Qty From 2 | 8/20/2014 | R.L.J. |



Includes (4) 3/8-16x1.5" SST Pentahead Bolts

Nordic Fiberglass, Inc.
 21415 US Hwy 75 NW, Warren, MN 56762
 www.nordicfiberglass.com
 218-745-5095 ph. --- 218-745-4990 fax

PROPRIETARY AND CONFIDENTIAL
 THE INFORMATION CONTAINED IN THIS DRAWING IS THE SOLE PROPERTY OF NORDIC FIBERGLASS, INC. ANY REPRODUCTION IN PART OR AS A WHOLE WITHOUT THE WRITTEN PERMISSION OF NORDIC FIBERGLASS, INC. IS PROHIBITED.

| | | |
|--|------|----------|
| Customer Name: N/A | | |
| DIMENSIONS ARE IN INCHES TOLERANCES: ANGLES $\pm 1^\circ$ FRACTIONAL $\pm 1/2$ ONE PLACE DECIMAL $\pm .060$ TWO PLACE DECIMAL $\pm .030$ THREE PLACE DECIMAL $\pm .015$ | | |
| MATERIAL | | |
| DRAWN | NAME | DATE |
| P.J.W. | | 06/02/06 |
| CHECKED | --- | --/--/-- |

| | | |
|--------------|--------------|---------------|
| GSC-30-18-MG | | |
| SIZE | ITEM ID: | REV. |
| A | 02100.00 | REL-03 |
| SCALE:1:8 | SHEET 1 OF 1 | |